



Our Differentiation Mould Innovators

Dear Valued Parent and Titan,

Sometimes, it is difficult to remember how different things were just a month ago. We all had to adapt quickly to a new way of life. It has been disruptive for all of us, including Delta English School (DES). Events transpired so fast that we did not have time to reflect on what we have collectively achieved thus far.

To all our parents, thank you for doing a phenomenal job these past five weeks. Despite work and personal challenges, you graciously continue to accommodate our virtual learning program. A special thanks to our working Moms who sacrifice their time and energy for our beloved Titans to attend daily virtual classes. I understand it is difficult and frustrating, but hang in there... this will be worth the effort when your Titan builds knowledge and skills. To all our Titans, thank you for adhering to DES virtual classroom policies.

I am proud of our associates - DES administrators, faculty, and support staff - who literally put their lives on the line every day, so all Titans can enjoy an uninterrupted virtual learning experience. I am inspired by what our associates have accomplished, and humbled to be a small part of this endeavor. It's a joy and honor to witness the innovative, creative, and most importantly - caring - work that every DES associate contributes to our institution.

Working together, DES has created a safer and smarter learning environment so Titans can receive high-quality CBSE education even during these unsettling times. From new e-learning solutions and successful sanitization practices to wearing masks, social distancing, and more - DES has already embraced a new style of education. I am reminded by a quote from Ian Malcolm in the 1993 blockbuster film *Jurassic Park*, in which he proclaims, "Life, finds a way." This quote is indeed true. Life ("we humans") has intelligently found many effective ways to adapt and evolve in this pandemic (FYI: *Jurassic Park* is a great family movie to watch if you never seen it before).

Looking back at history, this is not the first time that Earth has faced a global health crisis. Unlike the situation during Spanish Flu (1918), Asian Flu (1957-1958), and SARS (2003), we are truly blessed to live in the digital era. Advancements in technology have enabled DES to bring **Nebula** into your homes. Delta Education System, USA "spared no expense" in creating **Nebula** - the K-12 operating system of DES. You are now familiar with **Interchange**, which is our Learning Management System (LMS). Interchange is one of Nebula's apps and is built on Blackboard - the world's leading LMS engine. **DES is proud to be the only K-12 school in Middle East that use Blackboard products, including the industry-renowned Blackboard Collaborate.** Nebula is an integral part of our education program and shall remain even after COVID-19. Our unparalleled virtual educational services prove that DES is a premium CBSE provider and settles for nothing but the best.

The credit for Nebula's smooth operation goes to ITS (Information Technology Services) team at Delta Education System. They work 24/7 to resolve parent support tickets so you can focus on education rather than worry about technical roadblocks. We thank all parents who submitted constructive feedback within the past month. Keep the support tickets coming in so we can improve Nebula for all Titans.

Lastly, we cannot forget to thank the Government of Sharjah as well as local health personnel, including physicians, nurses and medical technicians, for their admirable work in controlling the COVID-19 transmission. I request you to keep them in daily thoughts and prayers.

DES Virtual Learning Expectations: For Titans



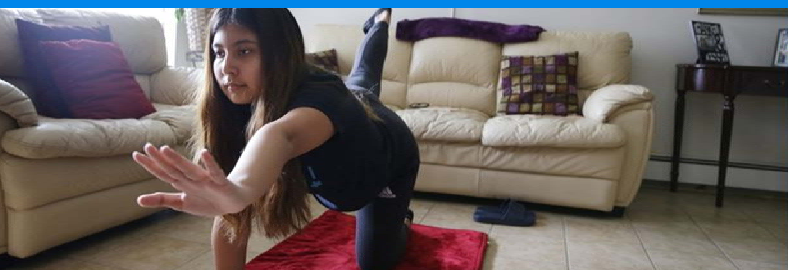
2. MICRO-LECTURES (MINI LESSONS) ►

Micro-lectures are under 10 minutes and occur in **Main Course Rooms** within **Blackboard Collaborate**. Instructors will present Polls and graphic organizers that you must complete during these micro-lectures.



4. INTERACTIVE ASSIGNMENTS ►

Each course within **Interchange** will feature interactive assignments like video presentations, image or essay uploads, multiple-choice, short response, true or false, fill-in-the-blank, discussion forums, blogs, and journals.



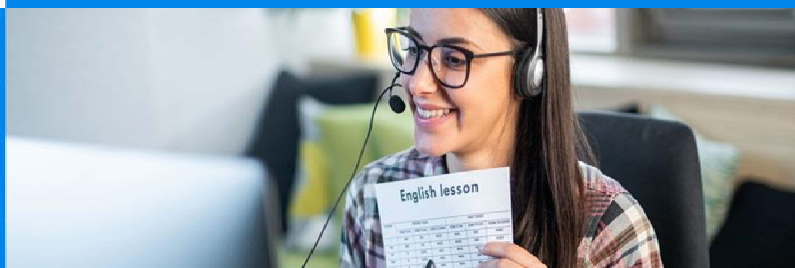
6. ANNOUNCEMENTS ►

Within **Interchange**, instructors will post announcements inside courses and DES will post announcements on **My Institution** page. Monitor announcements throughout each day. You will NOT receive frequent circulars.



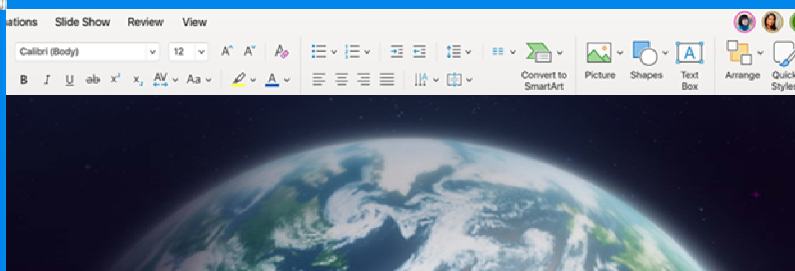
◀ 1. ATTENDANCE

Refer your **Virtual Course Schedule** and attend all virtual classes in **Blackboard Collaborate**. Instructors will record your daily attendance. Students who partially attend one or more periods (for any reason) will receive a low score.



◀ 3. SMALL GROUP ACTIVITIES (SGA)

After micro-lectures in each course, exit **Main Course Room**, go to your directed **Group** homepage and enter **Group Room** via **Blackboard Collaborate**. Work with group members to complete the assigned SGA game sheets.



◀ 5. EXTRACURRICULAR ACTIVITIES

Despite COVID-19, DES will continue to organize virtual Extracurricular Activities (ECA) within **Interchange** and **Blackboard Collaborate**. Participation is mandatory. All ECA events are evaluated for co-scholastic grades.



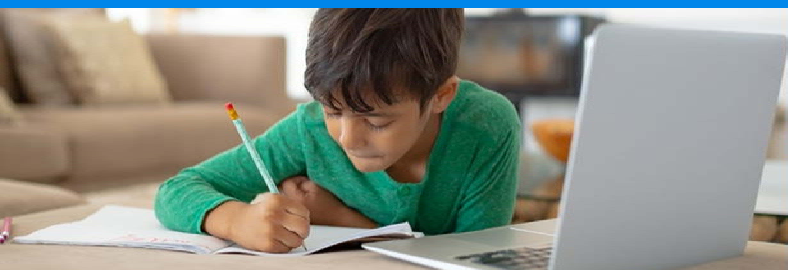
◀ 7. INSTRUCTOR & COURSE EVALUATIONS

As part of DES Quality Assurance Program, DES will post **Instructor and Course Evaluations (ICE)** every two weeks in each course within **Interchange**. Complete all bi-weekly ICE so DES can improve instructor and course quality.

DES Virtual Learning Expectations: For Titans (Continued)

8. TIME MANAGEMENT ►

Majority of assignments on **Interchange** have due dates. Late submission = Low grade. Do not procrastinate – Complete and submit ahead of time. Moving forward, assignments will reduce multiple attempts.



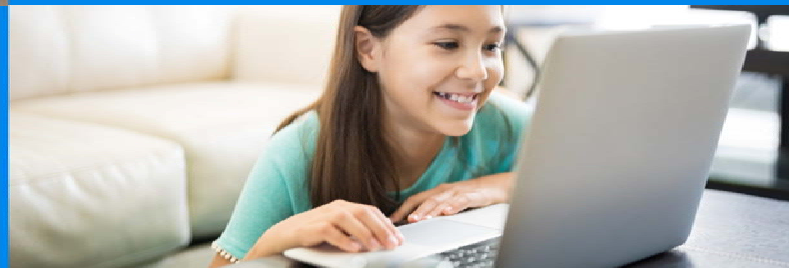
Success! Your submission appears on this page. The submission confirmation number is 3c78-434b-9da8-43325f52. Copy and save this number as proof of your submission.

Review Submission History: Week 1 Study Guide Questions

Assignment Instructions ^	Assignment Details v
Add two potential questions that could appear on the Week 1 test. Include the answers. I will compile all submissions for the class to use as a study guide.	GRADE LAST GRADED ATTEMPT

◀ 9. READ, READ, READ

Carefully read all instructions, lecture notes, and reading comprehension passages on **Interchange**. These relate to the topics. Do not be afraid to Google confusing course concepts. Reading is critical 21st century workplace skill.



10. TEACHER-STUDENT INTERACTION ►

Turn on your webcam in **Blackboard Collaborate** when prompted by instructors. Dress and be groomed professionally during virtual classes. Attend **Intervention Blocks** so Instructors can help improve your weak areas.



◀ 11. KEYBOARDING

For K1 - GL 02: Students must first figure out the answer and parents can then type it for students within **Interchange**. For GL 03 - GL 11: Students must type all answers within **Interchange** without parental assistance.



12. NON-ELA LANGUAGE SUPPORT ►

Read the **Display Language** help article in your Kindergarten / RTI course within **Interchange**. For non-ELA language courses, you are expected to type responses and submit files in Arabic and chosen second language.

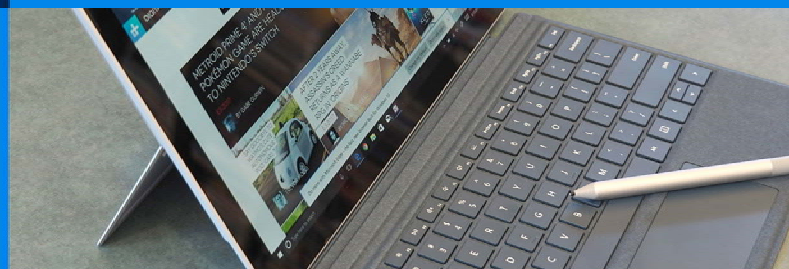


◀ 13. INTERNET CONNECTION SPEED

Maintain good internet connection speed at home. If your connection speed is slow, contact your Internet Service Provider (ISP) for an upgrade. ISPs may be busy, so act promptly to avoid connection dropouts.

14. PERSONAL, FUNCTIONING DEVICE ►

Use a personal, functioning device for daily virtual classes. For households with more than one child enrolled at DES, each child must have an independent device to complete coursework at the same time.



We want to ensure equitable learning for all Titans

In the past month, DES did not allow students to turn on their microphone and webcam on **Blackboard Collaborate**. This was intentionally done since many parents reported having poor internet connection speeds in their homes. However, maintaining teacher-student eye and voice contact during virtual classes is extremely important. Hence, DES will start allowing parents/Titans to turn on their microphone and webcam during Small Group Activity (SGA) sessions in Blackboard Collaborate. Parents must ensure to have good internet connection speed at home or else the audio-video will experience interruptions.

As stated in "DES Virtual Learning Expectations" on previous page, each Titan must have a personal, functioning device. We received reports that some Titans are using smartphones for virtual learning. It is true that Nebula apps can work on any device. But, we highly recommend Titans to use a tablet, laptop or desktop computer. Smartphones are not designed to handle daily virtual learning.

If you absolutely need to purchase a tablet or laptop, **ITS team strongly recommends the following devices. You can purchase any other device but will run the risk of incompatibility issues.** ITS performed extensive surveys of different devices in the market and determined the following devices to be highly compatible with Nebula.

Target Users:	K1 - GL 02	Target Users:	GL 03 - GL 12
Device:	Surface Pro X (tablet)	Device:	Surface Laptop 3 (laptop)
Display:	13-inch touchscreen	Display:	13.5-inch touchscreen
Storage Capacity:	128GB or higher	Storage Capacity:	256GB Solid-State Drive (SSD) or higher
Finish:	Platinum	Finish:	Platinum
Required Accessory #1:	Surface Slim Pen (Platinum)	Processor:	Quad-core 10th Gen Intel Core™ i7 Processor
Required Accessory #2	Surface Pro X Keyboard (Platinum)	Memory:	8GB or higher
Operating System:	Windows 10 Home (latest version)	Required Accessory #1:	Surface Slim Pen (Platinum)
Browser:	Chrome (latest version)	Operating System:	Windows 10 Home (latest version)
Case:	Rugged folio case in black color	Case:	Rugged folio case in black color

Surface Pro X and Surface Laptop 3 were selected for its touchscreen capabilities, performance and durability.

This statement has been authorized for delivery:

Sincerely,



Anita D'Cruz

Principal, Delta English School

